

ALKOSIGN®

WRITING & DISPLAY SYSTEMS



The biggest & only manufacturers of top quality Writing & Display Systems in India.



Sliding Board



Updown Board



- ◆ WHITE DRY WIPE / GREEN CHALK BOARDS
- ◆ DISPLAY BOARDS
- ◆ NOTICE BOARDS
- ◆ GROOVED BOARDS
- ◆ STANDS & ACCESSORIES

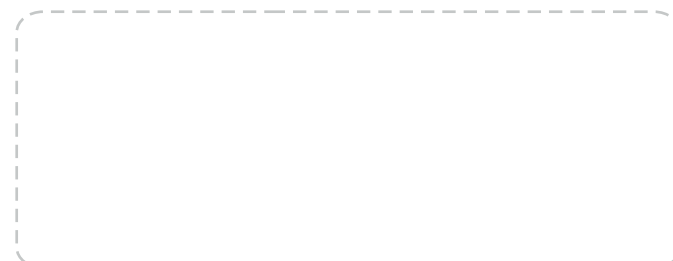
ALKOSIGN®

ALKOSIGN DISPLAY SYSTEMS

Corporate off :-
801, Embassy Chamber, 3rd Road, Khar (W), Mumbai - 400 052. INDIA.
Tel.: 0091-22-2604 2168 / 7567/ 9165 / 5370 Fax.: 0091-22-2605 1387

Works :- Bldg. No. 4, Sheetal Supreme Ind. Complex, Survey No. 75, H. No.2,
Waliv, Satalivi Road, Vasai (E), Dist. Thane- 401208. Tel.: 0250-645 7250 (16 Lines)
Email : sales@alkosign.com Web Site : www.alkosign.com

STOCKIST



This Catalogue should not be reproduced Wholly or Partially as it is covered under Copyright Act.

Dgn. & Print. - Avis Creations - 98205 87661



We welcome you to the exciting new **MODERN CONCEPT IN WRITING & DISPLAY SYSTEMS**

ALKOSIGN

The only **ISO 9001-2008 COMPANY** are the biggest manufacturers of Writing & Display Systems in India.

We have the best of the machines from Europe & are using **HOT POWER PRESSING technology** The manufacturing is semi automated & the only one of its kind in India.

Since the inception of the company in 1992 our sales in the local as well as the export market have increased many times over.

Our success has been due to strict quality control, use of best quality raw materials, good packaging and none the least our vast marketing network.

We are proud to introduce the latest Patented products to keep you tuned with the international scenario in this millennium.



Up coming

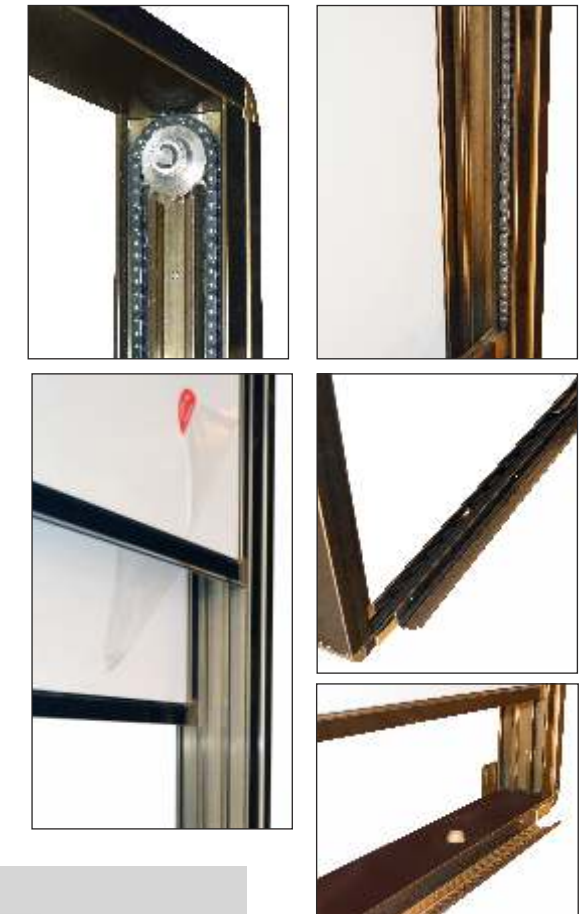
- ▶ UP DOWN WRITING BOARDS 3
- ▶ HORIZONTAL SLIDING WRITING BOARDS 4
- ▶ CONVENIENT FOLDING BOARDS & STANDS 5
- ▶ THREE LEGGED STEEL STAND / HANGING BOARDS 6
- ▶ FIRST AID BOX 7
- ▶ KEY BOX 8
- ▶ LETTER BOX 9
- ▶ SMALL PARTS STORAGE BOX 10
- ▶ WRITING SURFACES FOR ASTRA WRITING BOARDS 11
- ▶ ASTRA CHROME SUPER BOARDS 12
- ▶ ASTRA CHROME PLUS BOARDS 13
- ▶ ASTRA CHROME WRITE BOARDS 14
- ▶ ASTRA FELT / FABRIC NOTICE BOARD 15
- ▶ ASTRA COMBINATION / CORK BOARDS 16
- ▶ SLIDING COVER GLASS CABINETS :- PIN BOARDS 17
- ▶ MAGNETIC WHITE NOTICE BOARDS 17
- ▶ SLIDING COVER GLASS STEEL BACK KEY CABINETS 18
- ▶ STEEL BACK KEY CABINETS 19
- ▶ ACRYLIC COVER KEY CABINETS 20
- ▶ ENGLISH LETTERS & FIGURES 20
- ▶ ASTRA PEG BOARDS 21
- ▶ ASTRA GROOVED FELT BOARDS 22-23
- ▶ ACRYLIC COVER NOTICE BOARDS / WRITING DESK 24
- ▶ ASTRA WRITING BOARD ACCESSORIES 25-26
- ▶ STANDS FOR BOARDS 27
- ▶ ASTRA THREE & FOUR LEGGED STEEL STANDS 28
- ▶ FLIP CHART BOARDS / HOLDERS / PAPERS 28
- ▶ ASTRA FIXED BOARD STANDS / REVOLVING BOARD STANDS 29
- ▶ ASTRA EXHIBITION DISPLAY SYSTEMS 30-31
- ▶ LOBBY INFORMATION BOARDS / MAGAZINE STANDS 32
- ▶ PAPER STANDS 32
- ▶ EXECUTIVE GLASS WRITING BOARDS / LECTERN 33
- ▶ YEARLY / MONTHLY / WEEKLY PLANNERS 34
- ▶ NEW PRODUCTS COMING SOON 35

INTRODUCES WORLD CLASS WRITING BOARDS FOR LECTURE ROOMS

In this system the boards are dependent on each other. When one board is pushed up for reading the other board come down automatically for writing making the best use of space and keeping the continuity of reading & writing. All preprinted white surfaces for writing with dry wipe markers or green for writing with chalk is available. Full length pen trays are provided. Five sets of fixing clamps and screws with rawal plugs, 3 for bottom and two for top are provided for fixing on any wall.

Art No.: **AUDP 240240**
for white dry wipe marker boards.
Art No.: **AUDPC 240240**
for green chalk.

Two or three boards can be joined together on the wall to make it to the size of 24000mm X 48000mm or 24000mm x 72000mm



Other sizes & combinations as per request Fitting instructions provided with every board.



INTRODUCES WORLD CLASS WRITING BOARDS FOR LECTURE ROOMS

Turn even a small conference room or classroom into a huge multimedia communication center. The Horizontal Sliding Unit can be used to combine writing boards, display boards, magnetic boards and projection surfaces.

In these type of board the back board is fixed in the three track back channel. Two smaller boards can move from left to right in the other tracks independently. Surface of the boards are either prepainted white to write with dry wipe markers or green to write with chalk. When the small boards are on the sides the center portion can also be used for projection purpose on white board. Full length pen/duster trays are provided. Set of brackets with screws and rawal plugs, 5 for bottom & 3 for top are provided to fix on any wall.

Art No.: **AHSBP 120360** (1200mm x 3600mm) for writing with dry wipe markers.

Size of two small boards can be of size 1200mm x 900mm or 1200mm x 1200mm as per order.

Art No.: **AHSBPC 120360** (1200mm x 3600mm) for writing with chalk

Size of two small boards can be 1200mm x 900mm or 1200mm x 1200mm as per order.



Other sizes & combinations as per request

Fitting instructions provided with every board.



FOLDING WRITING BOARD

- ▶ Folding board is of size 600mm x 900mm and after folding it becomes 600mm x 450mm
- ▶ Strong carry bag is provided to carry the board conveniently.
- ▶ The surface is prepainted white for dry wipe markers or green for writing with chalk.

Art No.: **ACFBP 6090** for white boards.

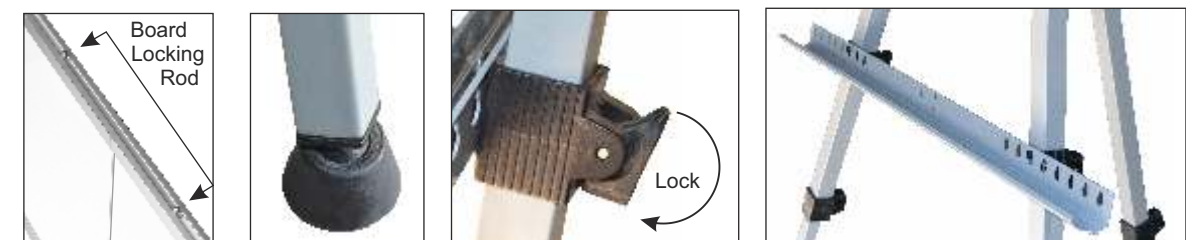
Art No.: **ACFBPC 6090** for green boards.



TELESCOPIC STAND

- ▶ Telescopic stand become half size when inner pipes are telescoped inside the outer pipes.
- ▶ Convenient strong carry bag is provided to carry the stand.
- ▶ Tray to hold the boards is provided. Size suitable for 600 x 900 boards. Maximum height of stand 1600mm.

Art No.: **AWBST/3L 6090**





NEW THREE LEGGED STEEL STANDS

- ▶ Suitable for ASTRA Boards.
- ▶ Three legged steel stands.
- ▶ Sturdy design Colour Grey.
- ▶ Board rests on full length Aluminium channel.
- ▶ Height adjustable.

Height of stand 1600mm
 Suitable for boards up to 900mm X 1200mm
ART NO. AWBS / 3L / N
 Order boards separately.



ECONOMICAL HANGING SERIES BOARDS

The most economical boards for regular use The surface is either special high pressure laminate white for writing with dry wipe markers or green for writing with chalk in three sizes only.

High Pressure Laminate Boards



Dry Marker Pen Boards
 Art No.: **AEHBW 4560**
 Size : 450mm x 600mm
 Art No.: **AEHBW 6090**
 Size : 600mm x 900mm
 Art No.: **AEHBW 90120**
 Size : 900mm x 1200mm



Chalk Boards
 Art No.: **AEHBWC 4560**
 Size : 450mm x 600mm
 Art No.: **AEHBWC 6090**
 Size : 600mm x 900mm
 Art No.: **AEHBWC 90120**
 Size : 900mm x 1200mm



ACCIDENT ! DON'T PANIC
Keep Everything Your First Aid Kit Needs Handy

- ▶ Most elegant and economical first aid box available.
- ▶ Must for every residence, office or industrial establishment.
- ▶ Powder coated aluminium uprights for strength.
- ▶ Pivoting drawers for easy accessibility to medicines.
- ▶ All drawers have two partitions to divide into 2 sections or 3 sections.
- ▶ Consists of 1 drawer of height 125mm. Keep bottles or sprays etc.
- ▶ Plus two drawers of height 55mm. Keep tablet strips, ointments tubes, bandages etc.
- ▶ Lockable .
- ▶ Four holes provided in upright inside the box to fix on any wall with four screws and rawal plugs included

Art No : AFAB-1

Size of Box : 302mm (W) x 320mm (H) x 110mm. (D)



Art No.: **AFAB-1**
Size of box :
 302 mm (W) x 320 mm (H) x 110 mm. (D)

Regd. Design No.: 262701



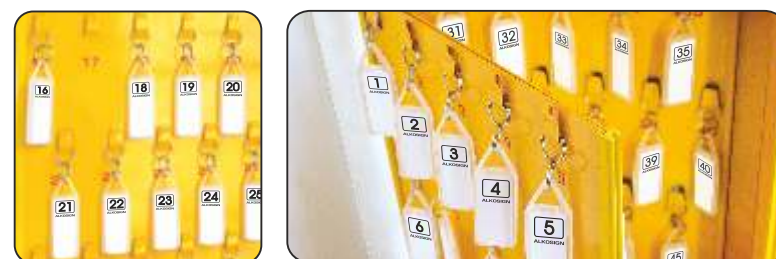
KEY BOX



- ▶ Elegant and strong key box available.
- ▶ Very useful to store keys safely.
- ▶ Powder coated aluminium uprights for strength
- ▶ Pivoting front set of 30 keys for easy accessibility of last 15 keys.
- ▶ All key chain holding plates are numbered.
- ▶ All key holders have numbered paper inside the key chain to write any name.
- ▶ Key chain with two rings so the key always remains at the back and front can be read easily.
- ▶ Lockable for security.
- ▶ Four holes provided on the uprights inside the box to fix on any wall with four screw and rawal plugs provided.

Art No.: AEKB 15 (Key box to hold 15 keys)
 Art No.: AEKB 45 (Key box to hold 45 keys)

Size of box :
 302mm (W) x 320mm (H) x 110mm (D)



Art No.: AEKB 15 (Key box to hold 15 keys)
 Art No.: AEKB 45 (Key box to hold 45 keys)

Size of box :
 302mm (W) x 320mm (H) x 110mm (D)
Regd. Design No.: 262700

LETTER BOX



- ▶ Strong and elegant A4 letter box.
- ▶ Lockable for security.
- ▶ Can take in big envelopes up to A4 size.
- ▶ Space to write name of society members or any individual.
- ▶ Paper stickers provided to write names.
- ▶ Can fit on the wall with four screw and rawal plugs included.
- ▶ Can also be used as **SUGGESTION BOX** in exhibitions or any establishment.
- ▶ Ten Big holes provided to see contents from outside.

Art No.: ALB-A4
 Size of Box :
 302mm (w) x 355mm (h) x 110mm (d)



Art No.: ALB-A4
 Size of Box :
 302mm (w) x 355mm (h) x 110 mm (d)
Regd. Design No.: 262698



- ▶ Best small parts organizer system available.
- ▶ Store small electronic parts, stationary, hardware etc.
- ▶ Powder coated aluminium uprights for strength.
- ▶ Pivoting drawers for easy accessibility to parts stored.
- ▶ Four holes provided on the uprights inside the box to fix on any wall with four screw and rawal plugs included.
- ▶ Lockable.

Art No. ASPSB-6
Systems with 6 drawers of height 35 mm with two partitions to divide in two or three sections

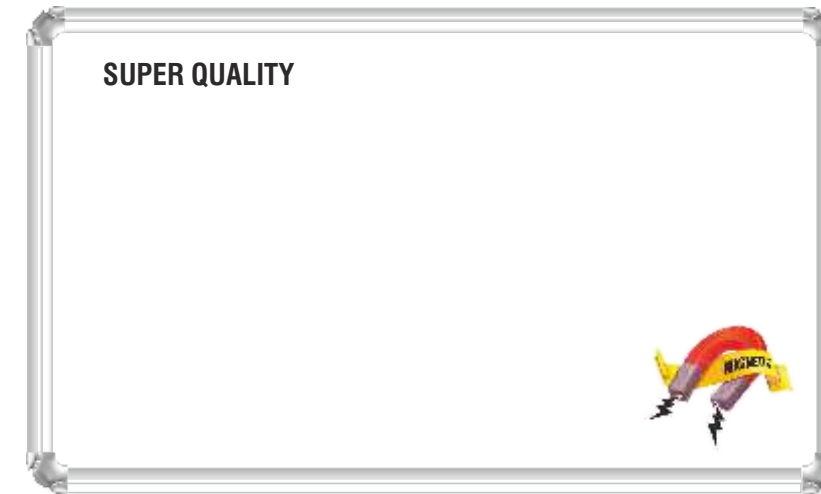
Art No. ASPSB-4
Systems with 4 drawers of height 55 mm with two partitions to divide in two or three sections

Art No. ASPSB-3
Systems with 3 drawers of height 80 mm with two partitions to divide in two or three sections

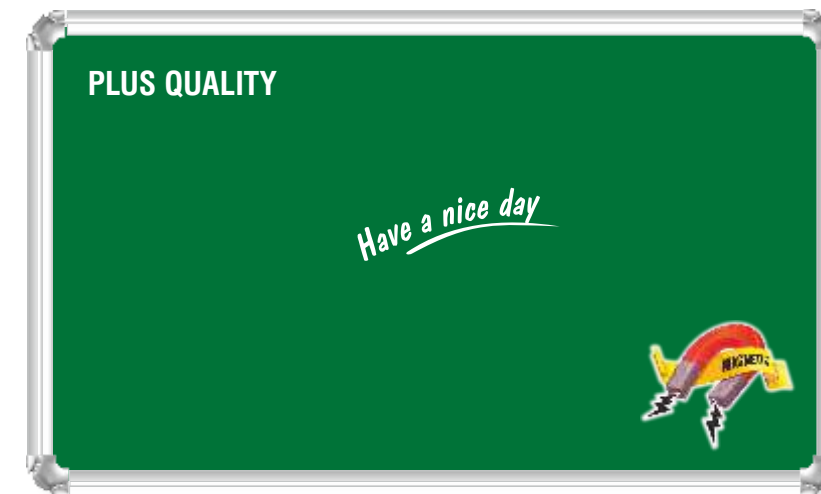
Size of box :
302mm (w) x 320mm (h) x 110mm (d)



Art No. ASPSB-6
Art No. ASPSB-4
Art No. ASPSB-3
Size of box :
302mm (w) x 320mm (h) x 110mm (d)
Regd. Design No.: 262699



SUPER QUALITY ☆☆☆☆☆ Long term intensive use.
Ceramic (Porcelain Enamel) fused at high temperature on steel surface has a very high surface hardness & excellent abrasion resistance. Twenty five years guarantee for the surface under normal use.
Semi matt surface can be used as a screen for OHP also.
Accepts magnets.
Available in white color for writing with dry wipe markers and green for writing with chalk.



PLUS QUALITY ☆☆☆☆☆ Long term regular use. Triple coated steel surface with top coat of acrylic resin over a galvanized steel base. Surface is smooth, glossy and permits easy writing and erasing.
It is a good economical surface.
Accepts magnets.
Available in white color for writing with dry wipe markers and green for writing with chalk.



WRITE QUALITY ☆☆☆ regular use.
It is the most economical dry wipe or chalk writing surface. It is highly durable. High pressure special white melamine surface for writing with dry wipe markers and **special coated green laminate surface** for writing with chalk.
Does not accept magnets.